



Trench Heating

Katherm NK

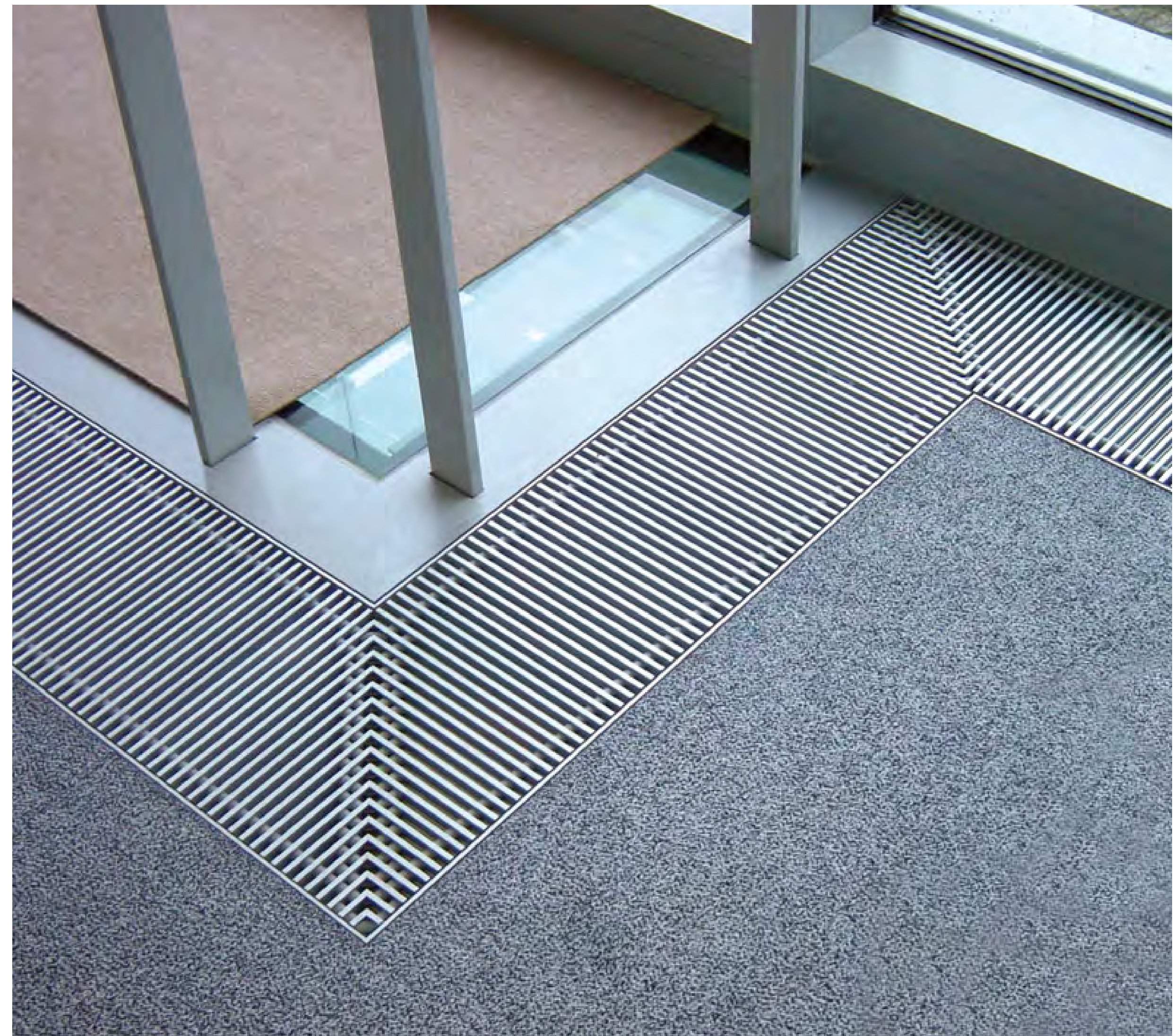
Geared to the future

You are investing in future-proof quality with the Katherm NK. It works efficiently, even with low water temperatures, keeping operating costs to a permanently low level.



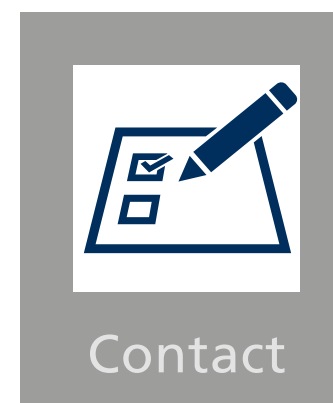
Various dimensions

Design can be this easy! Especially if you can choose between five widths, four heights and 22 lengths, as with the NK range.



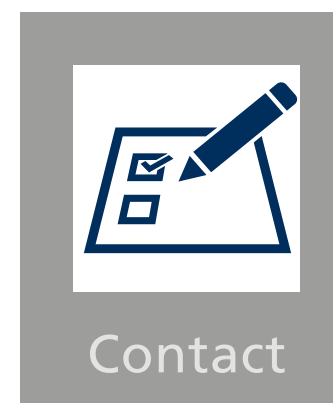
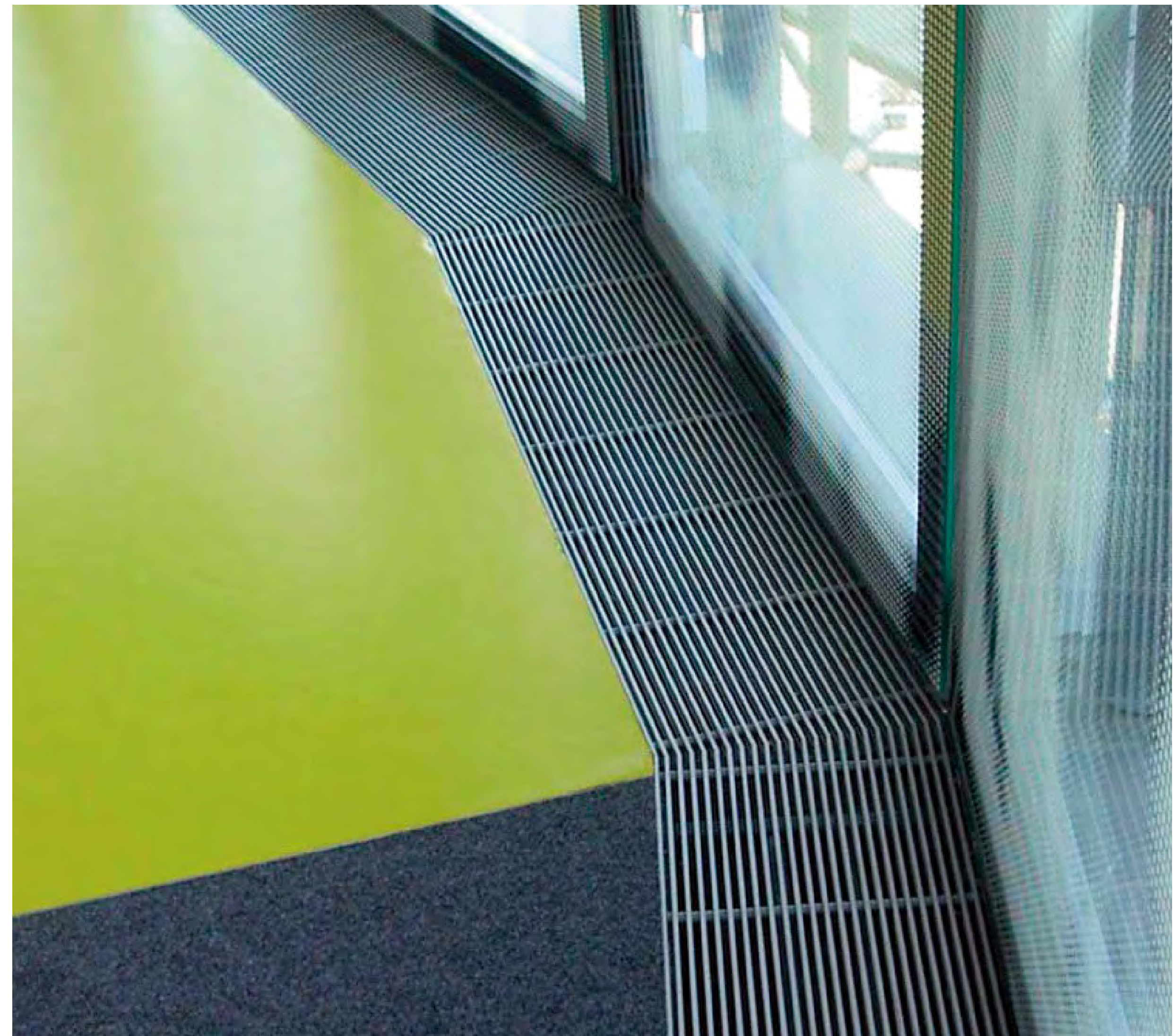
Tailor-made

Your customer gets the thing you appreciate about Kampmann:
individual made-to-fit trenches for
all façades. Regardless of whether
you need mitred corners, curved
trenches, column cutouts etc.



With a matching frame

The matching frame for every grille finish - all possible for the Katherm NK. The icing on the cake for a perfect look.



Easy installation

Work on site is far easier with the Eurokonus valve connection. Other standard features, such as height adjustment feet and load-bearing raised floor brackets, reduce installation time and thus also costs.



Advantages



Overview



Details



Performance



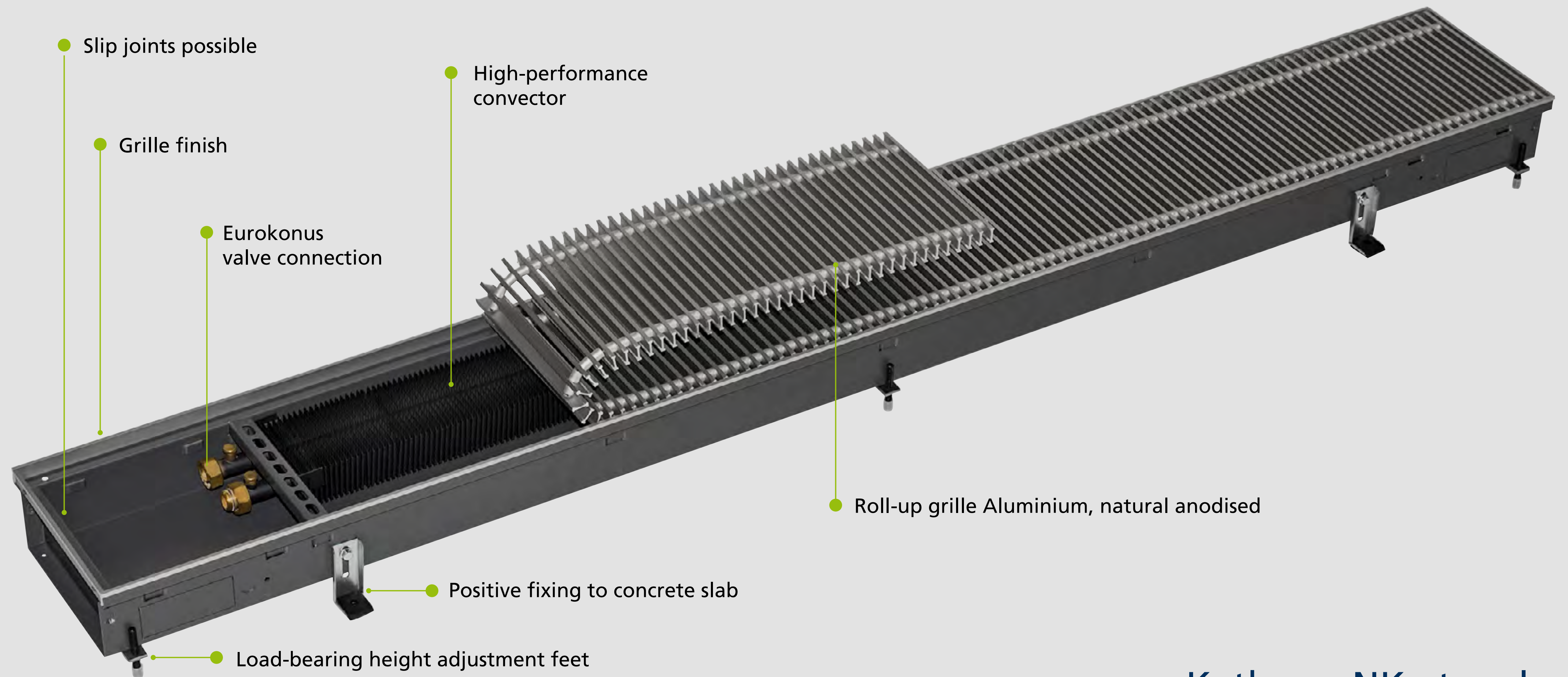
Contact

KAMPMANN
Genau mein Klima.

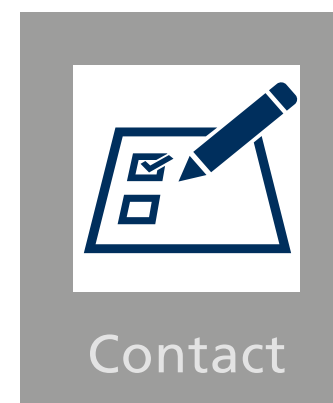
Design reliably

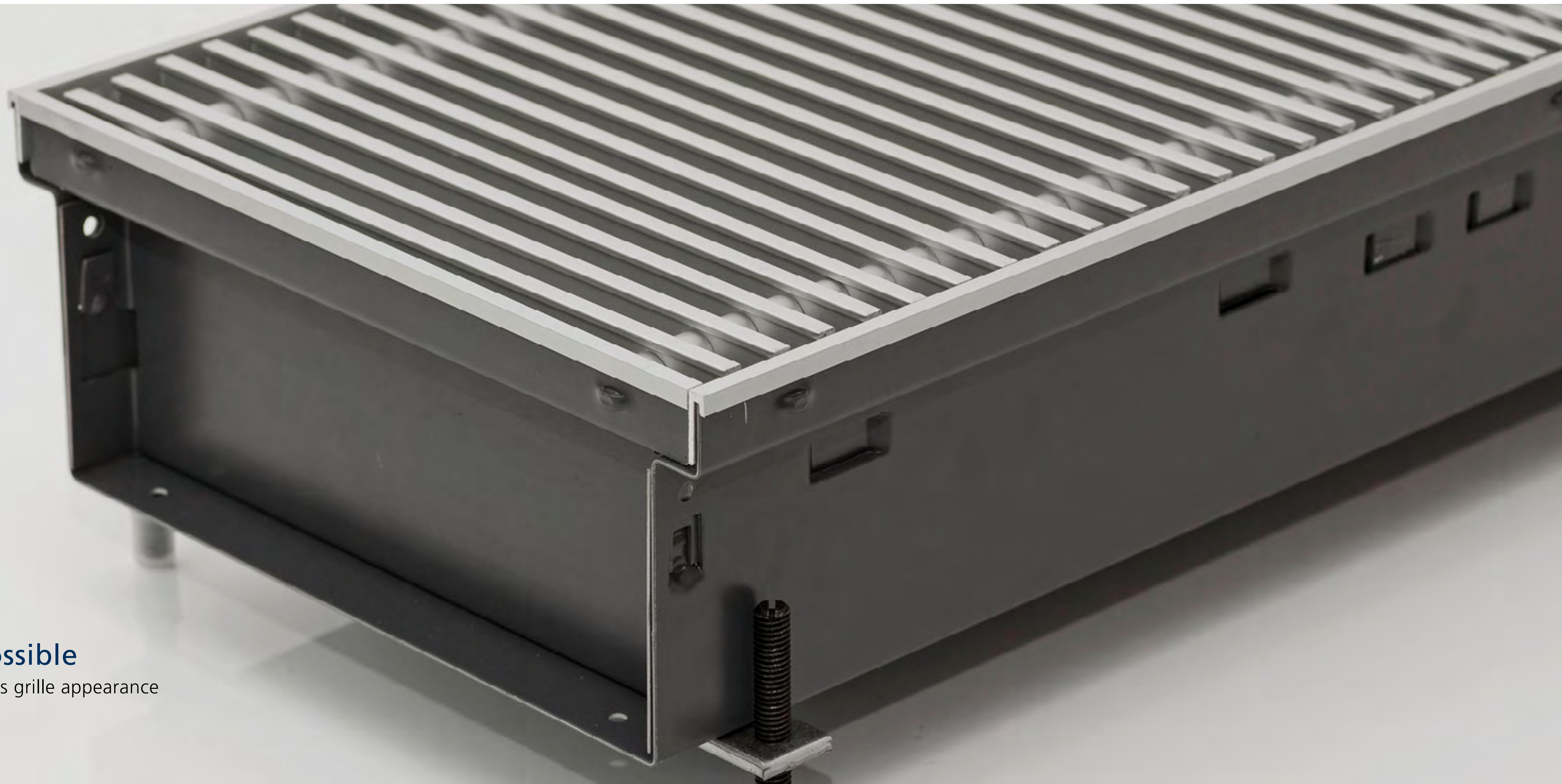
Design our standard trenches with short delivery times. You can also rely on our support for your individual project to find the respective solution.





Katherm NK at a glance





Slip joints possible

► To allow continuous grille appearance



Advantages



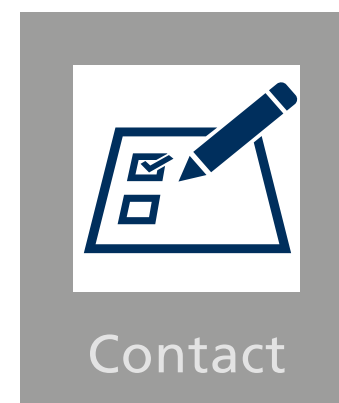
Overview



Details



Performance



Contact

KAMPMANN
Genau mein Klima.



Cover plate

- As visual cover and protection against dirt ingress



Advantages



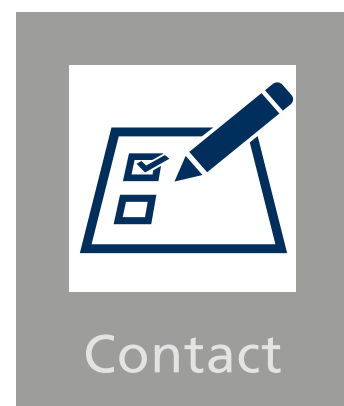
Overview



Details



Performance



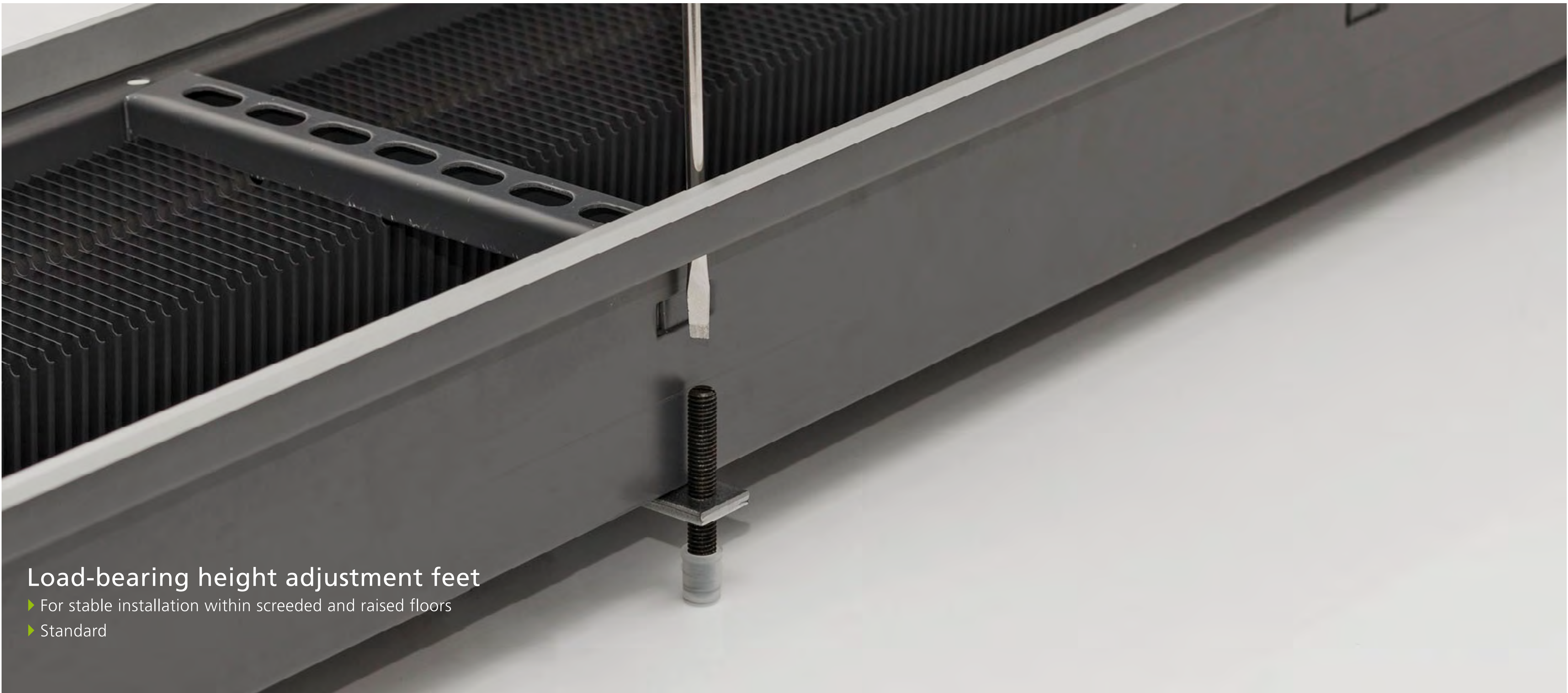
Contact



Coloured frame

► To match grille finish



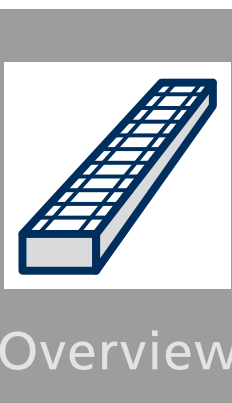


Load-bearing height adjustment feet

- For stable installation within screeded and raised floors
- Standard



Advantages



Overview



Details



Performance



Contact

KAMPMANN
Genau mein Klima.



Positive fixing to concrete slab

► For stable installation within screeded and raised floors



Advantages



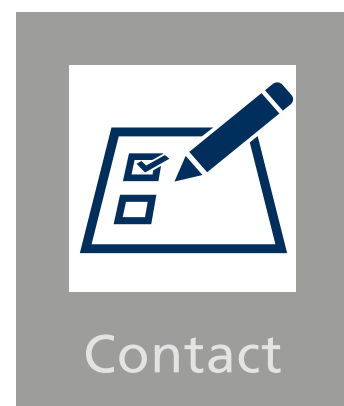
Overview



Details



Performance



Contact

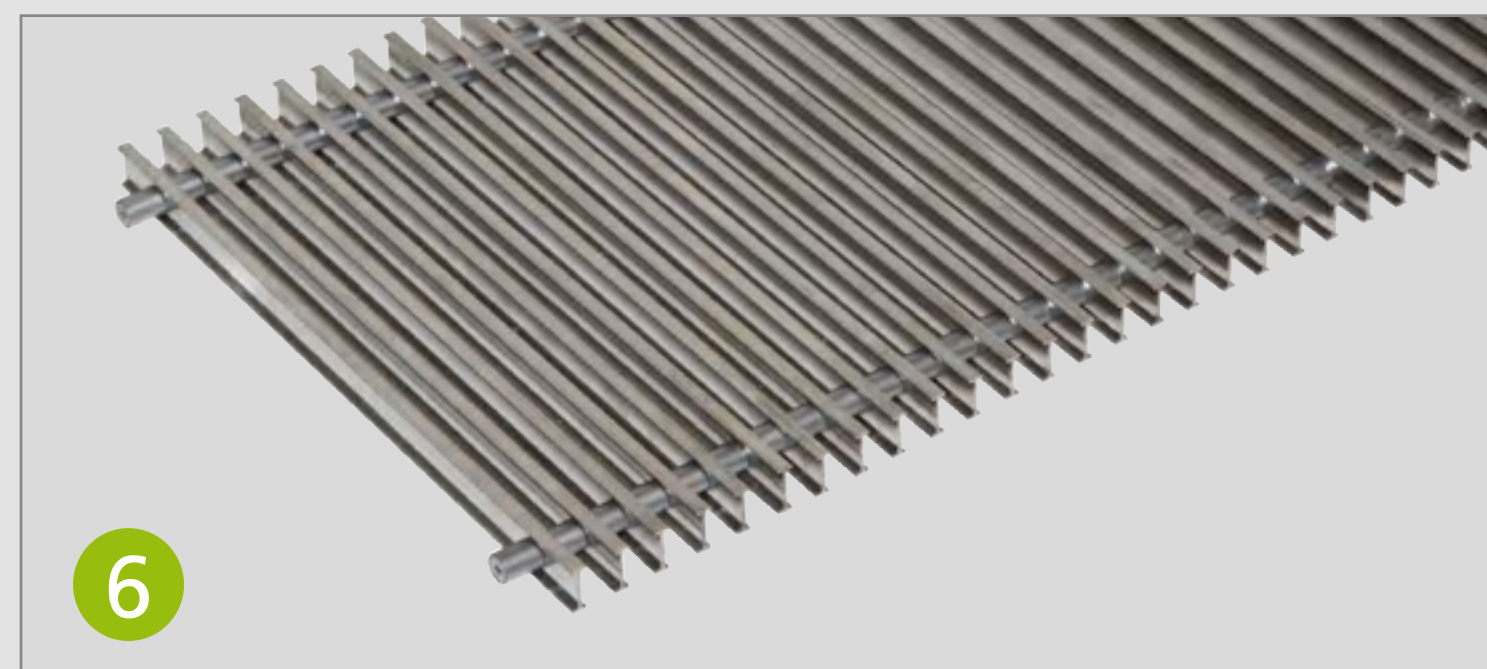
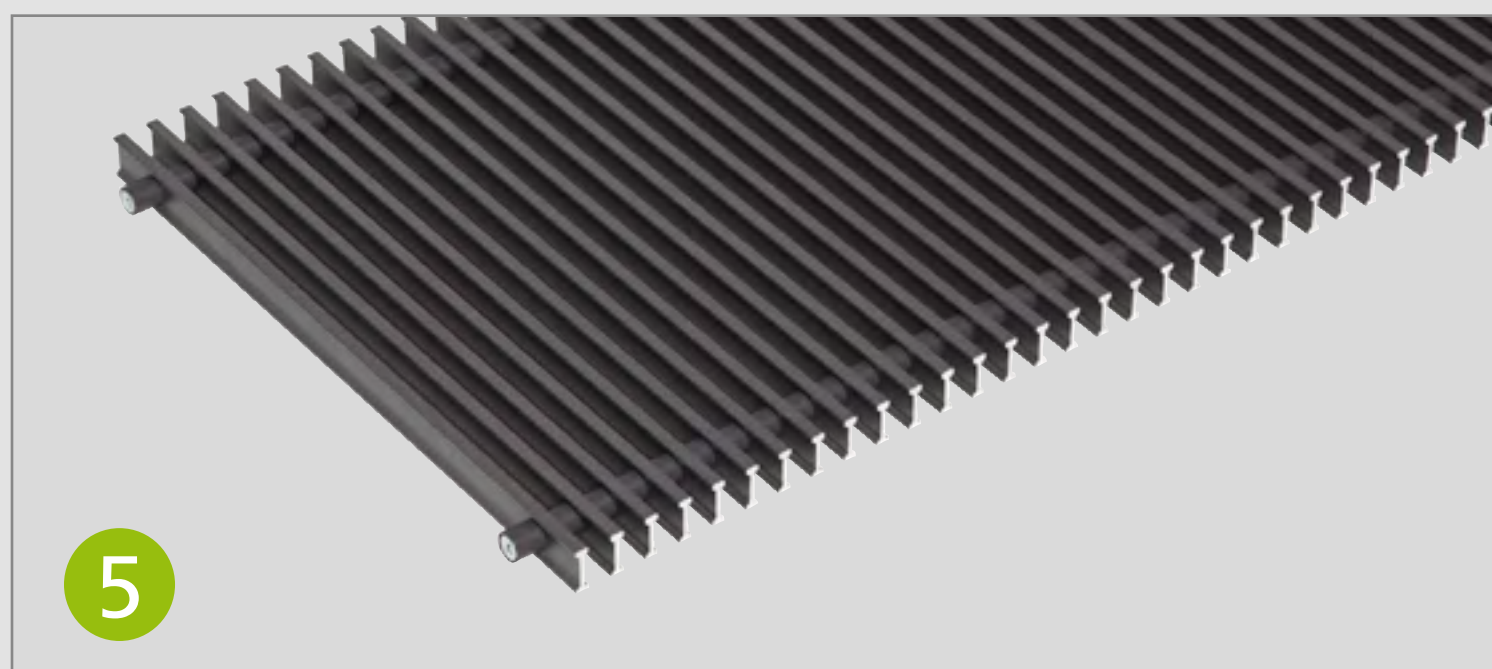
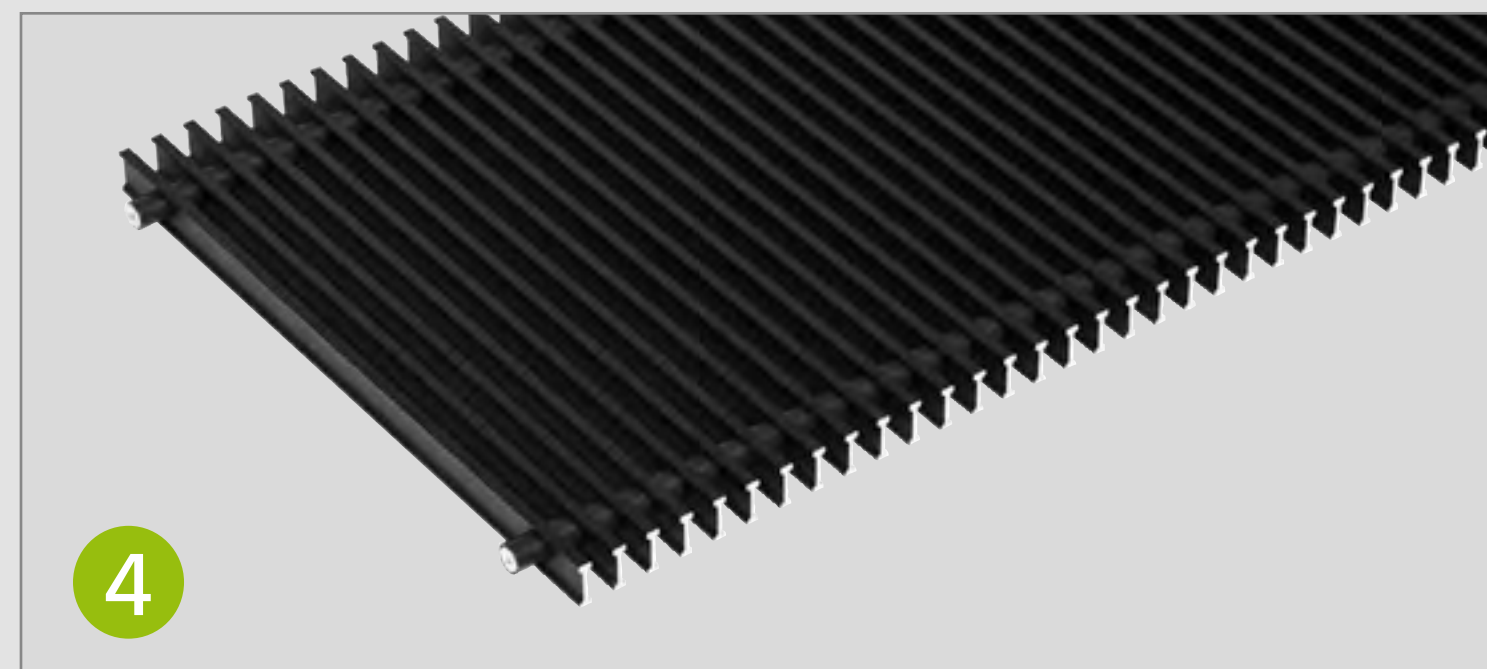
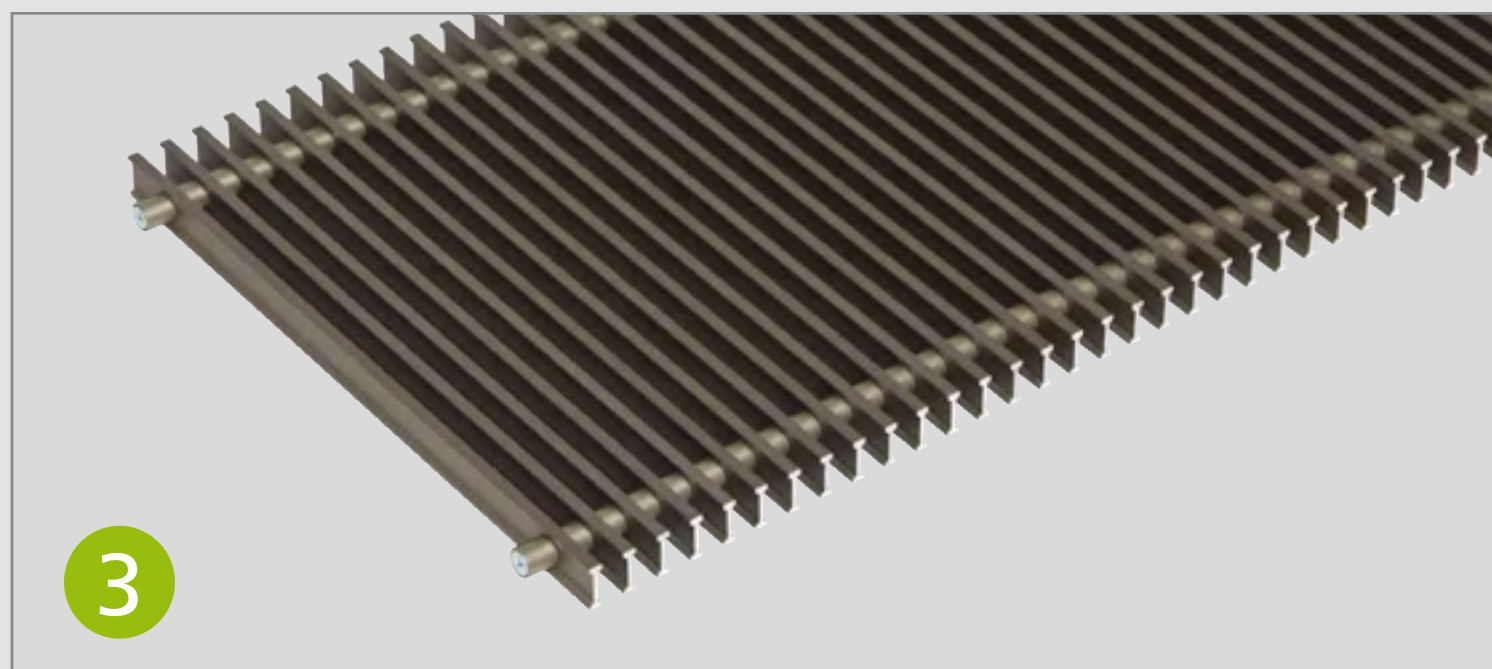
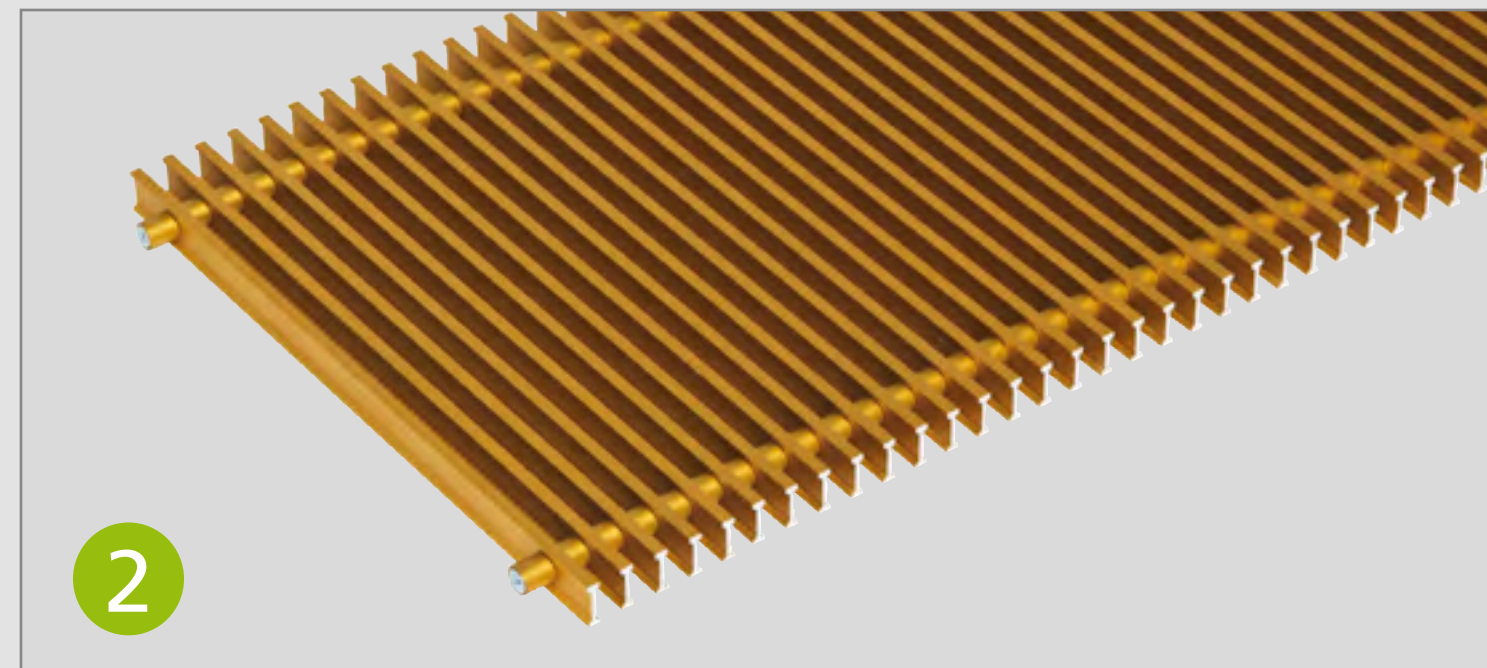
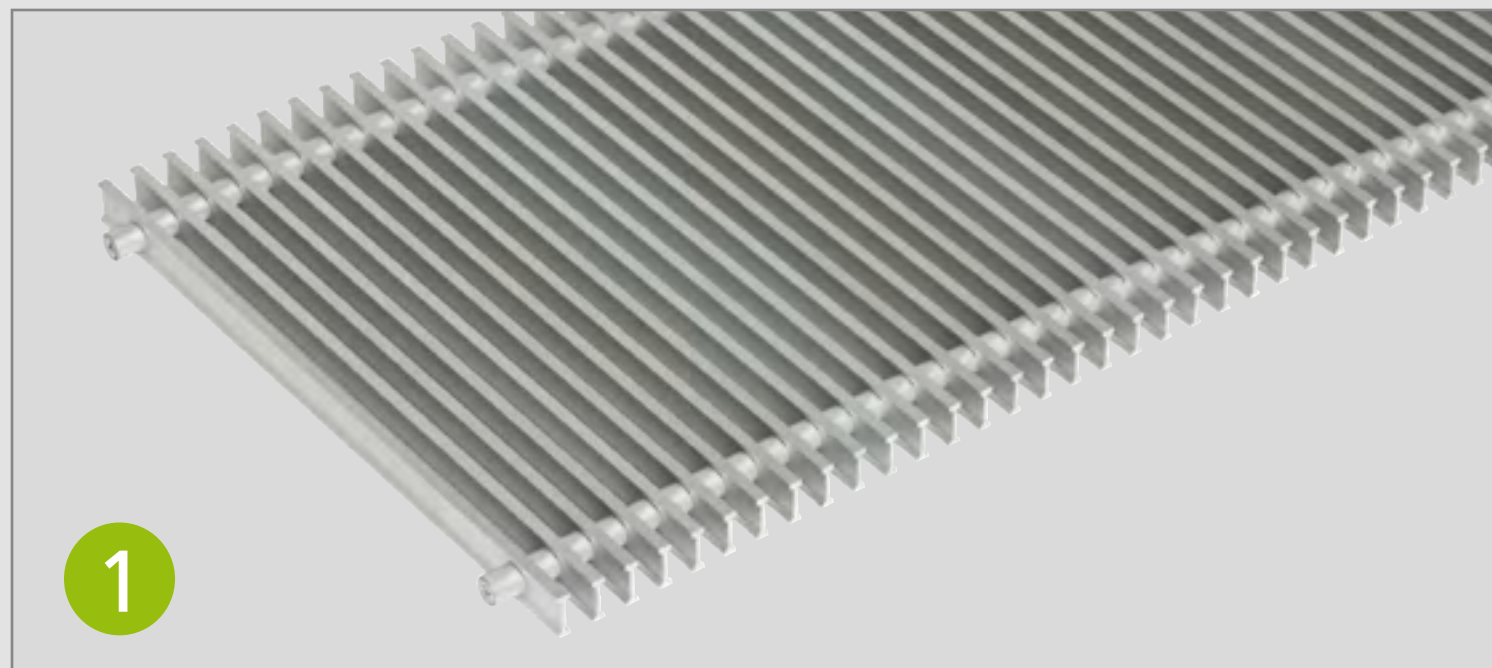
KAMPMANN
Genau mein Klima.



Eurokonus valve connection

- For easy connections
- Saves installation time





- 1 Aluminium, natural anodised
- 2 Aluminium, brass anodised
- 3 Aluminium, bronze finish
- 4 Aluminium, black anodised
- 5 Aluminium, painted DB 703
- 6 Stainless steel

Choice of grilles

(examples shown are roll-up grilles)

More grille finishes (linear grilles) at
Kampmann-uk.co.uk/grilles



Advantages



Overview



Details



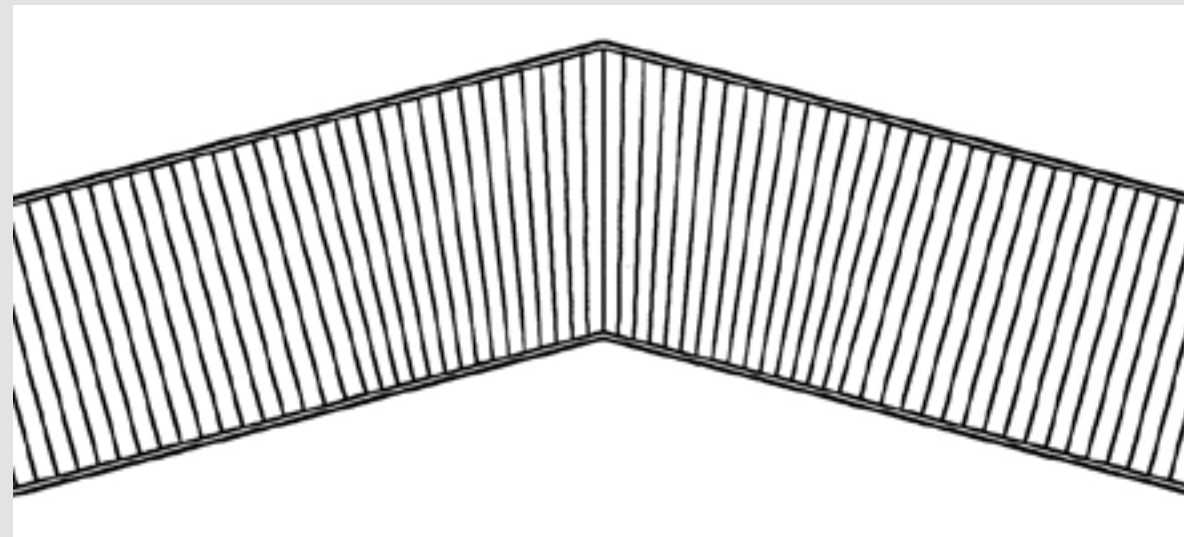
Performance



Contact

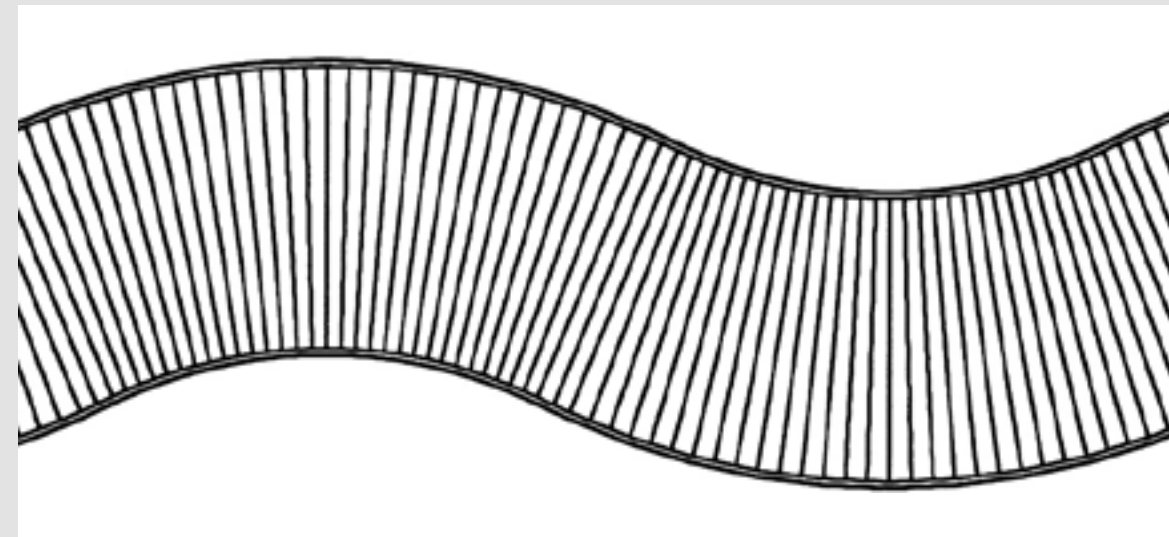
KAMPMANN
Genau mein Klima.

We can even cope with challenging sites with ease with our range of possible shapes and sizes.
The following options are possible:



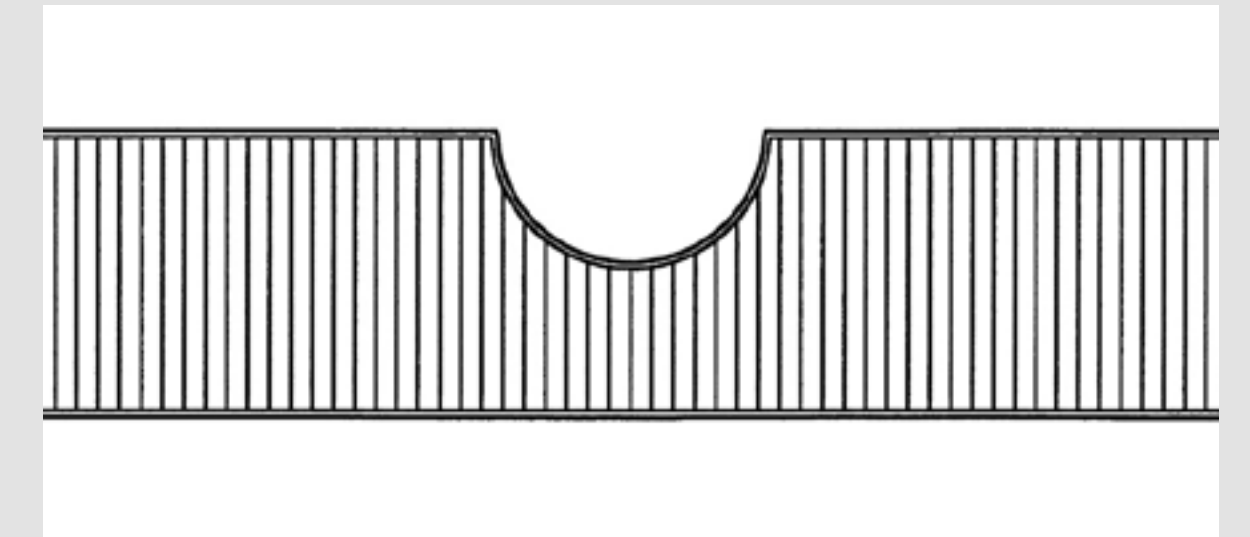
Mitred corners

- ▶ Any angle possible
- ▶ Curved



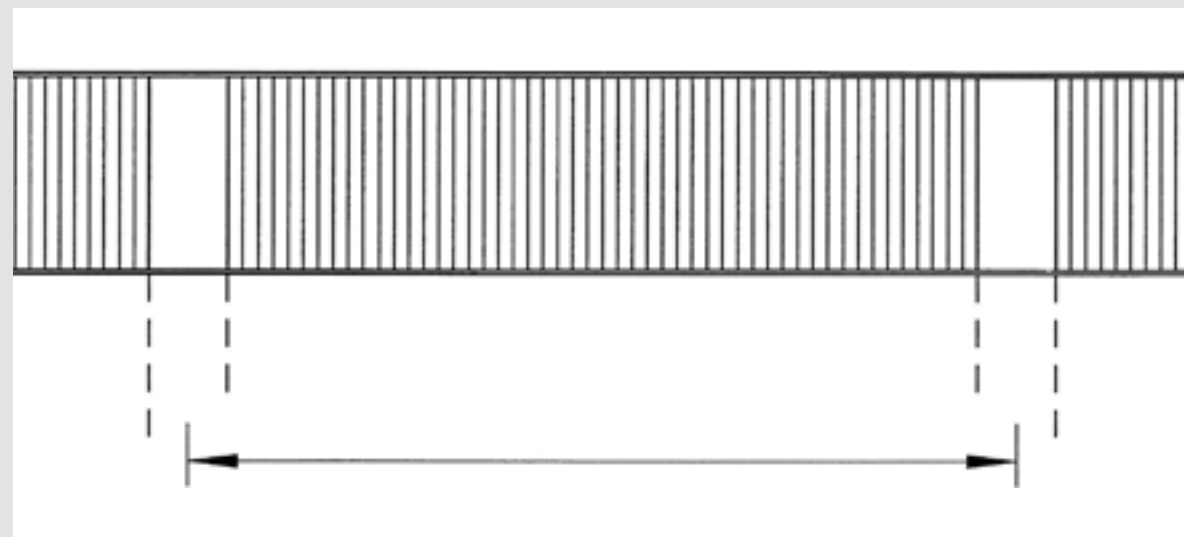
Curves

- ▶ Design of all components in a curved shape



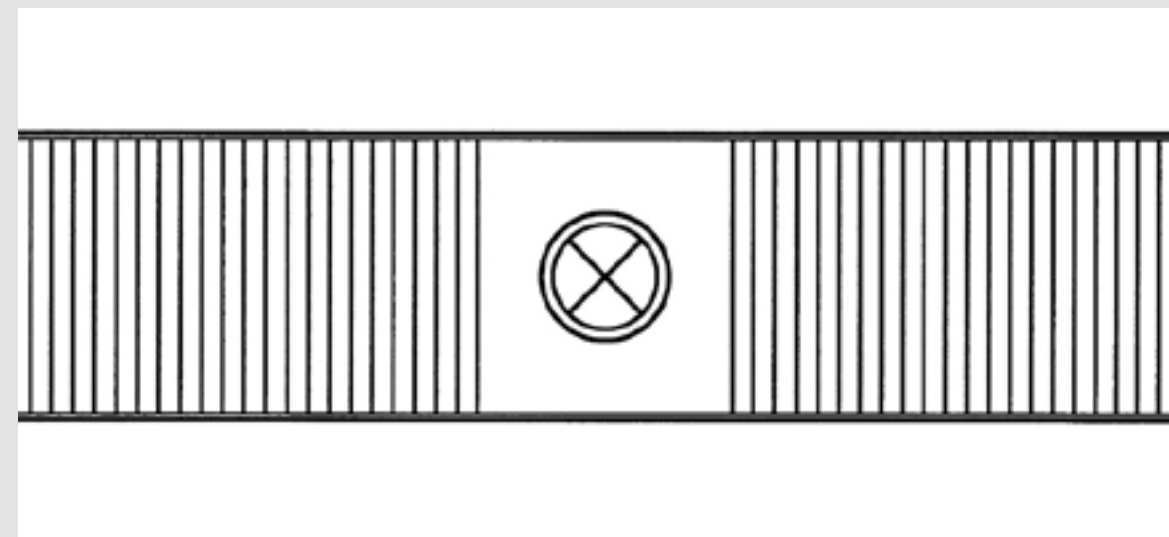
Cut-outs in the grille itself

- ▶ Integration of building parts, such as columns, mullions, etc.



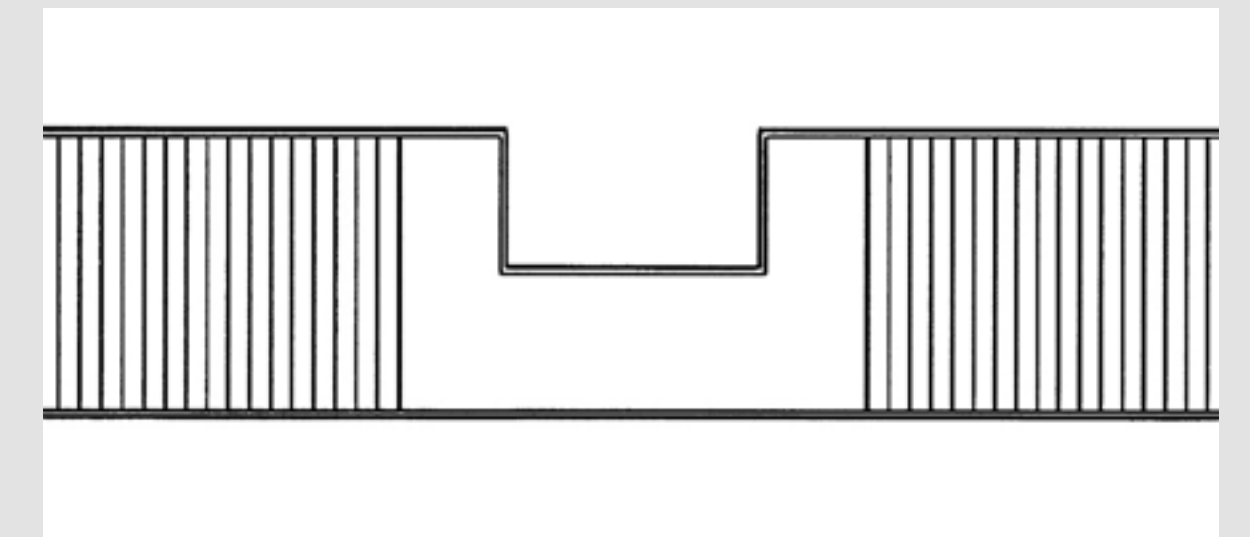
Cover plates at mullion positions

- ▶ Polygonal shapes along building façade



Cover plate for an electrical installation

- ▶ Luminaires
- ▶ Sockets

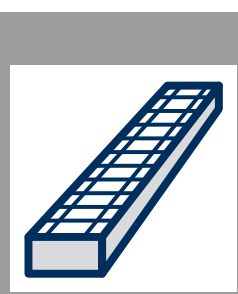


Cut-outs with a cover plate

- ▶ Integration of building parts, such as columns, mullions, etc.



Advantages



Overview



Details



Performance



Contact

The room thermostat is combined with a corresponding number of actuators and valves. The required room temperature is set on the room thermostat. If the room temperature falls below this set value, the thermoelectric actuator opens the waterside valve.

Clock thermostat

- ▶ Combination of room and clock thermostat
- ▶ In a flush-mounted design, white
- ▶ Setting of day and week programme
- ▶ Large display for the setpoint and target display

Room thermostat

- ▶ In an elegant flat surface-mounted housing
- ▶ With thermal setback

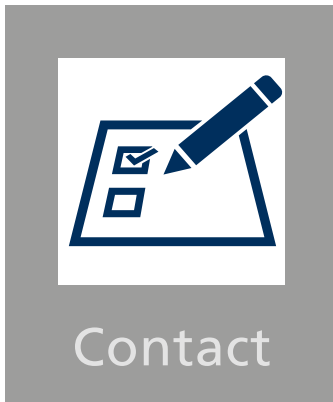
▶ Detailed information at Kampmann.co.uk



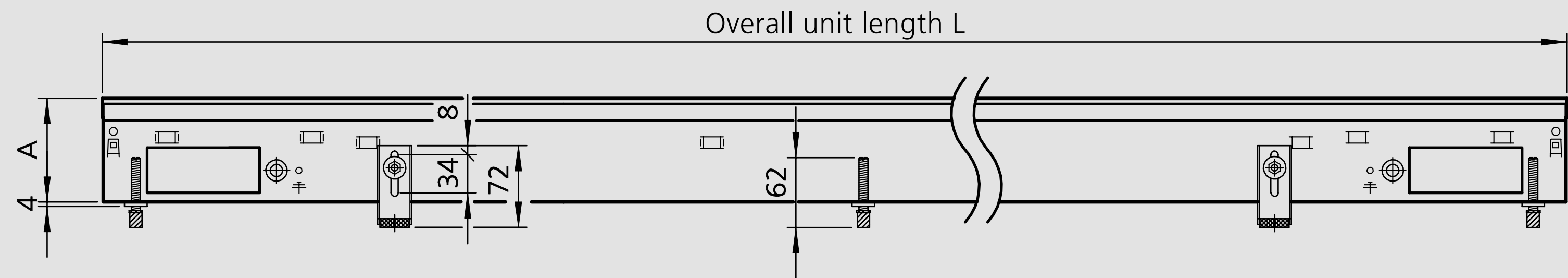
Heat output (with unit lengths of 800 mm to 5000 mm, room air temperature 20 °C)

LPHW heating medium	Unit height	Katherm NK 137	Katherm NK 182	Katherm NK 232	Katherm NK 300	Katherm NK 380
[°C]	[mm]	[W]	[W]	[W]	[W]	[W]
75 / 65	92	78-981	132-1295	157-1530	209-2036	279-2717
	120	84-1050	162-1594	193-1881	268-2609	344-3353
	150	/	206-1857	309-2778	394-3545	485-4362
	200	/	232-2084	334-3010	445-4003	621-5590
55 / 45	92	34-431	66-646	76-741	104-1011	142-1384
	120	35-438	80-784	93-911	133-1296	173-1691
	150	/	96-867	146-1381	189-1699	235-2112
	200	/	106-954	160-1442	211-1899	299-2693
50 / 40	92	26-322	51-504	59-572	81-788	112-1088
	120	26-321	62-608	72-703	104-1010	136-1325
	150	/	73-661	112-1010	145-1306	181-1630
	200	/	80-722	123-1109	162-1455	231-2075
45 / 35	92	18-224	38-372	43-417	60-580	83-810
	120	18-219	45-446	53-512	76-744	101-982
	150	/	53-474	81-729	105-947	132-1188
	200	/	57-513	89-804	117-1050	168-1508

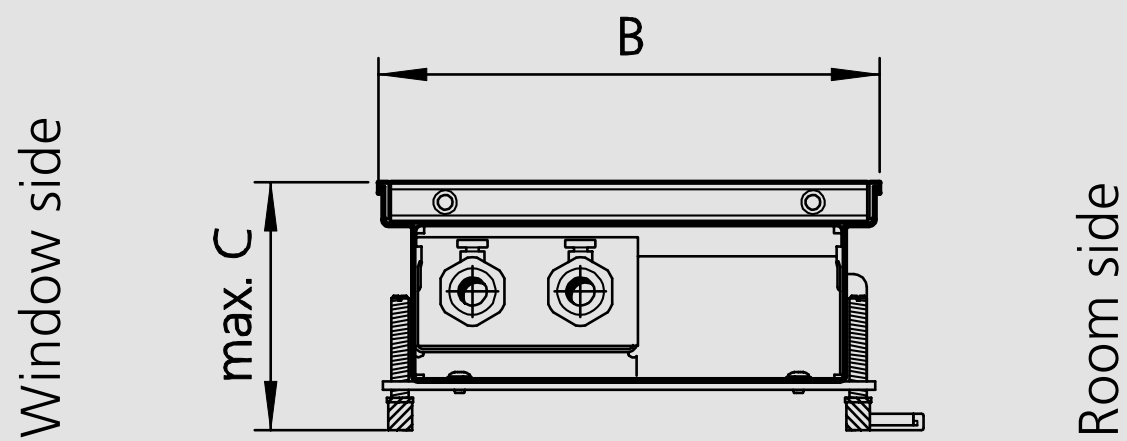
Heat output tested in line with the new DIN EN 16430 (Draft May 2012): fan assisted heaters, convectors, trench convectors



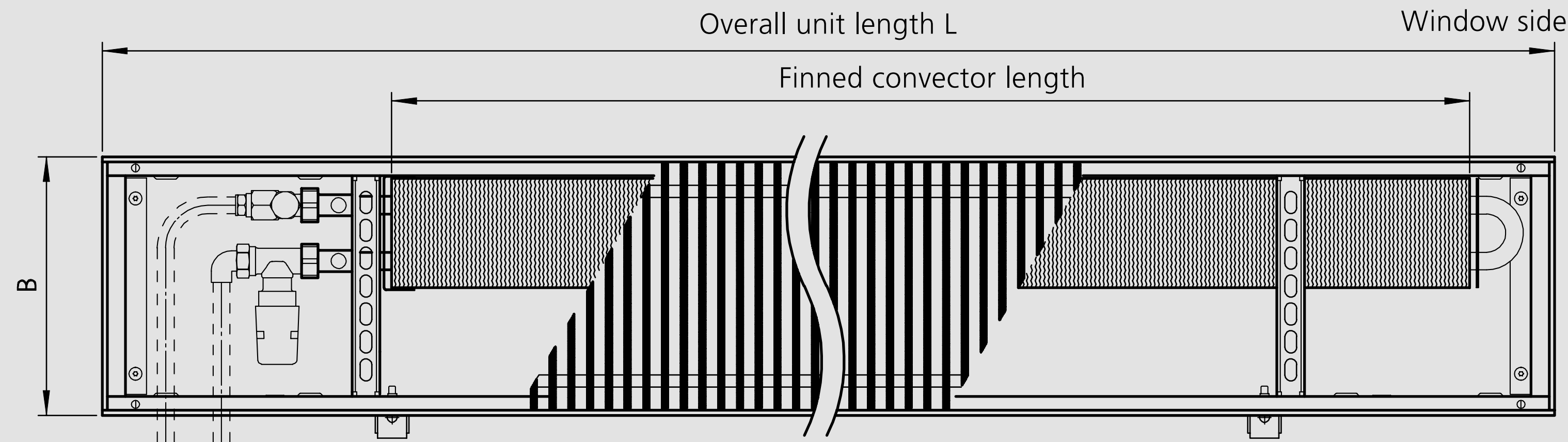
Dimensions



Front view, e.g. NK 232



Cross-sectional view, LHS connection, e.g. NK 232



Plan view, e.g. NK 232

Katherm	A	B	max. C
	[mm]	[mm]	[mm]
NK 137	92/120/--/--	137	126/154/--/--
NK 182	92/120/150/200	182	126/154/184/234
NK 232	92/120/150/200	232	126/154/184/234
NK 300	92/120/150/200	300	126/154/184/234
NK 380	92/120/150/200	380	126/154/184/234

NK 137: Trench height 150 mm and 200 mm not available. Opposite end connections only.

Advantages

Overview

Details

Performance

Contact

Benefits for you!

Kampmann offers you the following service benefits:

- ▶ On-site Consultation
- ▶ A Large Range of Samples
- ▶ Design Support
- ▶ Measurement Assistance
- ▶ Training
- ▶ After Sales Service

Here we are at your service:

[Kampmann.eu/contact](https://kampmann.eu/contact)



Best solutions. Best support.

Kampmann.eu



Kampmann GmbH

Friedrich-Ebert-Str. 128 – 130

49811 Lingen (Ems)

Germany

T +49 591 7108-660

T +49 591 7108-173

E export@kampmann.de

W Kampmann.eu

You
Tube

